

LBJ TROPICAL MEDICAL CENTER COMBINED ED/MRI/ICU



PRELIMINARY DEMOLITION PACKAGE

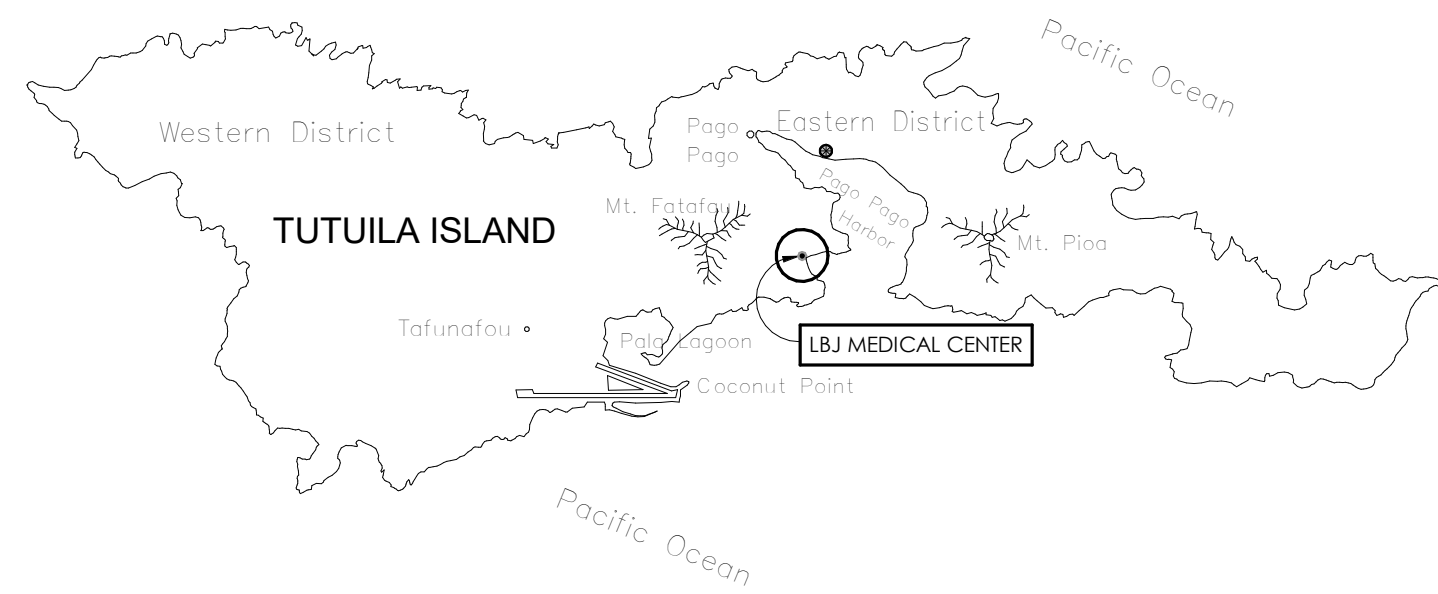
SCOPE OF WORK

DEMOLITION OF EXISTING BUILDING #3 - SWING WARD NORTH OF GRIDLINE 25. SLAB TO REMAIN.

REPAIR ROOF AS REQUIRED.

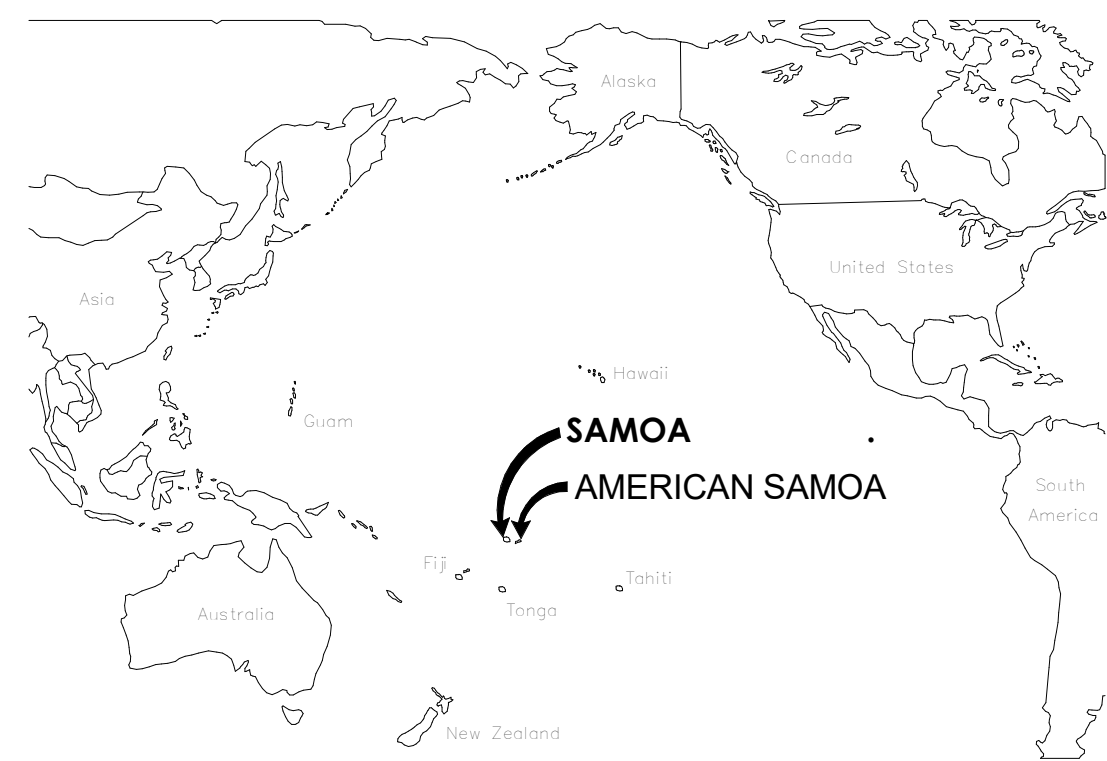
ALL UNDERGROUND UTILITIES TO REMAIN.

CONTRACTOR TO FIELD VERIFY ALL UTILITY LOCATIONS AND NOTIFY ARCHITECT OF ANY DISRPECENCIES.



Location Map

• NOTE: RAIN GAUGE LOCATION, EASTERN DISTRICT



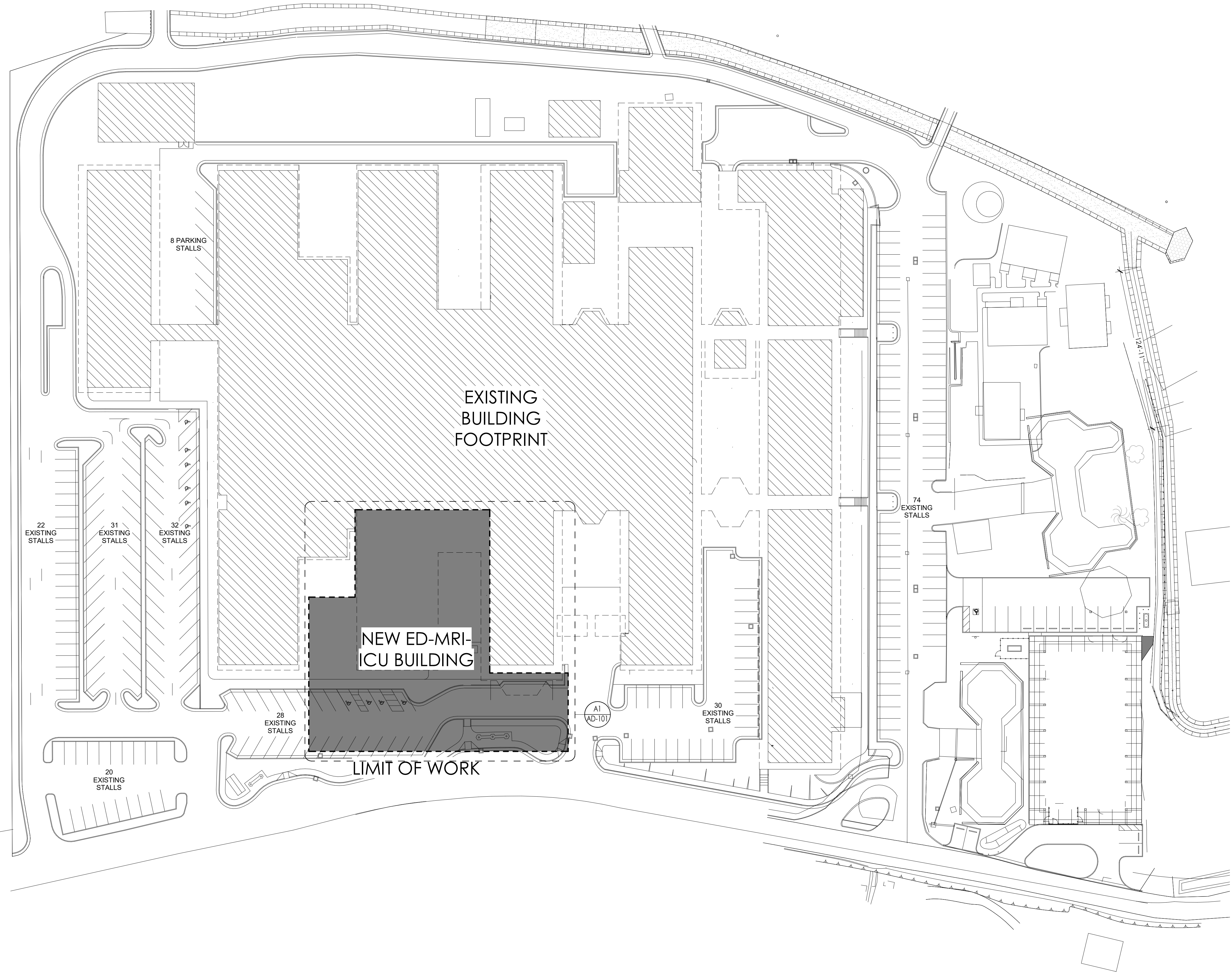
VICINITY MAP

SHEET INDEX

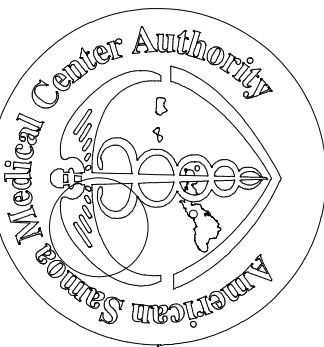
SHEET NO.

G-001	COVER SHEET
AD-101	ARCHITECTURAL SITE DEMOLITION PLAN - AREA A
AD-201	DEMOLITION SECTION AND DETAILS
MPD-101	MECHANICAL - PLUMBING SITE DEMOLITION PLAN - AREA A
ED-111	ELECTRICAL DEMOLITION PLAN

LBJ TROPICAL MEDICAL CENTER PARKING TALLY				
	NUMBER OF STALL (EXISTING)	STALL DEMOLISHED	NEW STALLS	FINAL STALL COUNT
ADA	10	4	2	8
NON-ADA	235	24	7	218
TOTAL	245	28	9	226



1 ARCHITECTURAL SITE REFERENCE PLAN
SCALE: 1" = 40'-0"



LBJ TROPICAL MEDICAL CENTER
ICU / MIS BUILDING EXPANSION

COVER SHEET

GLHN
ARCHITECTS & ENGINEERS, INC.
2938 E. Broadway Blvd. Tucson, AZ 85716
T. 520.881.4544 F. 520.795.1822 GLHN.COM

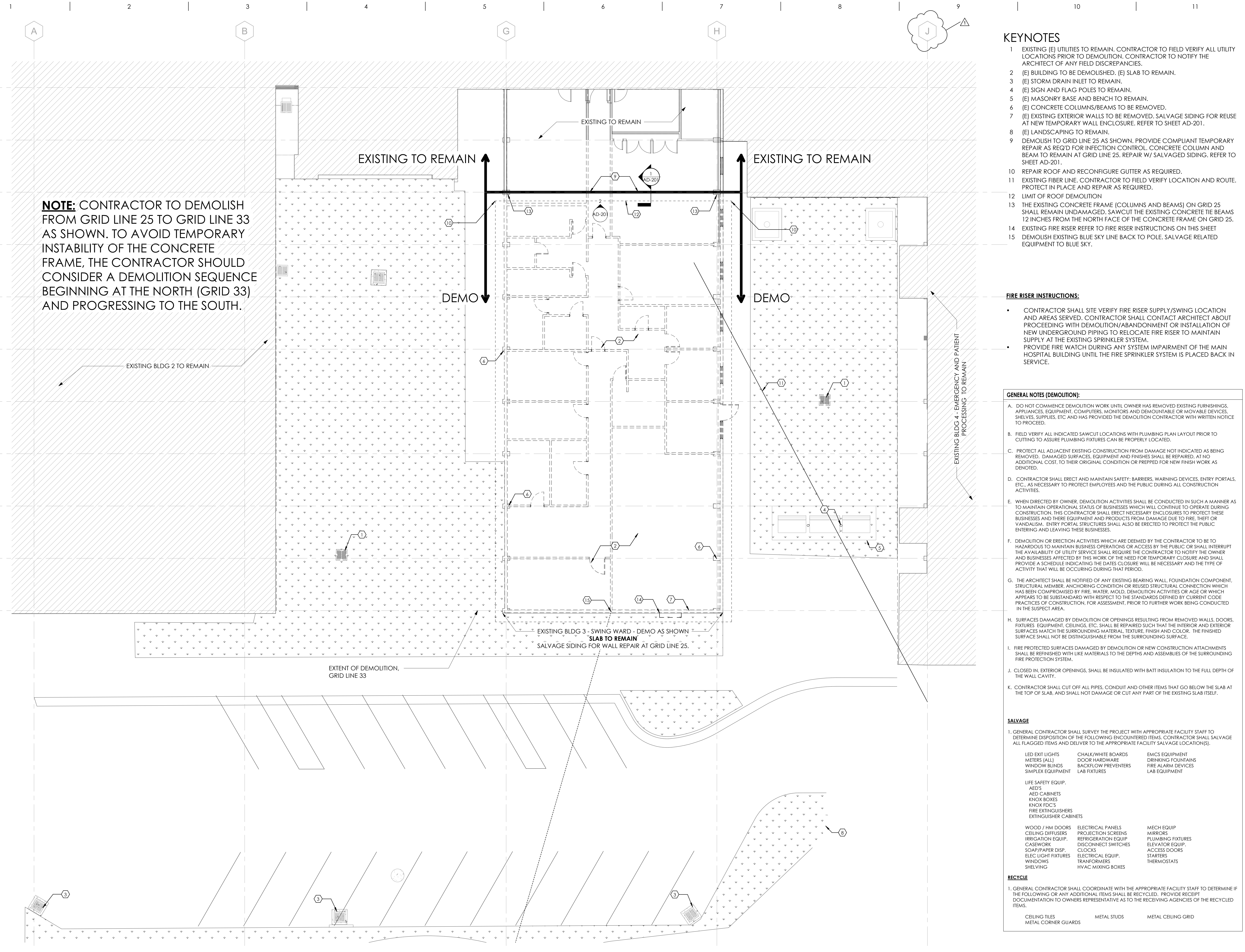


PROJECT NO.: 23020.00
DESIGN BY: RC
DRAWN BY: RH
CHECKED BY: MMC
DATE: 2023/09/13

SHEET 1 OF 4

G-001

COPYRIGHT 2020 GLHN ARCHITECTS & ENGINEERS, INC. ALL RIGHTS RESERVED.



A1 ARCHITECTURAL SITE DEMOLITION PLAN - AREA A
SCALE: 1/8" = 1'-0"

KEYNOTES

- 1 EXISTING (E) UTILITIES TO REMAIN. CONTRACTOR TO FIELD VERIFY ALL UTILITY LOCATIONS PRIOR TO DEMOLITION. CONTRACTOR TO NOTIFY THE ARCHITECT OF ANY FIELD DISCREPANCIES.
- 2 (E) BUILDING TO BE DEMOLISHED. (E) SLAB TO REMAIN.
- 3 (E) STORM DRAIN INLET TO REMAIN.
- 4 (E) SIGN AND FLAG POLES TO REMAIN.
- 5 (E) MASONRY BASE AND BENCH TO REMAIN.
- 6 (E) CONCRETE COLUMNS/BEAMS TO BE REMOVED.
- 7 (E) EXISTING EXTERIOR WALLS TO BE REMOVED. SALVAGE SIDING FOR REUSE AT NEW TEMPORARY WALL ENCLOSURE. REFER TO SHEET AD-201.
- 8 (E) LANDSCAPING TO REMAIN.
- 9 DEMOLISH TO GRID LINE 25 AS SHOWN. PROVIDE COMPLIANT TEMPORARY REPAIR AS REQ'D FOR INFECTION CONTROL. CONCRETE COLUMN AND BEAM TO REMAIN AT GRID LINE 25. REPAIR W/ SALVAGED SIDING. REFER TO SHEET AD-201.
- 10 REPAIR ROOF AND RECONFIGURE GUTTER AS REQUIRED.
- 11 EXISTING FIBER LINE. CONTRACTOR TO FIELD VERIFY LOCATION AND ROUTE. PROTECT IN PLACE AND REPAIR AS REQUIRED.
- 12 LIMIT OF ROOF DEMOLITION
- 13 THE EXISTING CONCRETE FRAME (COLUMNS AND BEAMS) ON GRID 25 SHALL REMAIN UNDAMAGED. SAWCUT THE EXISTING CONCRETE TIE BEAMS 12 INCHES FROM THE NORTH FACE OF THE CONCRETE FRAME ON GRID 25.
- 14 EXISTING FIRE RISER REFER TO FIRE RISER INSTRUCTIONS ON THIS SHEET
- 15 DEMOLISH EXISTING BLUE SKY LINE BACK TO POLE. SALVAGE RELATED EQUIPMENT TO BLUE SKY.

FIRE RISER INSTRUCTIONS:

- CONTRACTOR SHALL SITE VERIFY FIRE RISER SUPPLY/SWING LOCATION AND AREAS SERVED. CONTRACTOR SHALL CONTACT ARCHITECT ABOUT PROCEEDING WITH DEMOLITION/ABANDONMENT OR INSTALLATION OF NEW UNDERGROUND PIPING TO RELOCATE FIRE RISER TO MAINTAIN SUPPLY AT THE EXISTING SPRINKLER SYSTEM.
- PROVIDE FIRE WATCH DURING ANY SYSTEM IMPAIRMENT OF THE MAIN HOSPITAL BUILDING UNTIL THE FIRE SPRINKLER SYSTEM IS PLACED BACK IN SERVICE.

GENERAL NOTES (DEMOLITION):

- A. DO NOT COMMENCE DEMOLITION WORK UNTIL OWNER HAS REMOVED EXISTING FURNISHINGS, APPLIANCES, EQUIPMENT, COMPUTERS, MONITORS AND DEMOUNTABLE OR MOVABLE DEVICES, SHELVES, SUPPLIES, ETC AND HAS PROVIDED THE DEMOLITION CONTRACTOR WITH WRITTEN NOTICE TO PROCEED.
- B. FIELD VERIFY ALL INDICATED SAWCUT LOCATIONS WITH PLUMBING PLAN LAYOUT PRIOR TO CUTTING TO ASSURE PLUMBING FIXTURES CAN BE PROPERLY LOCATED.
- C. PROTECT ALL ADJACENT EXISTING CONSTRUCTION FROM DAMAGE NOT INDICATED AS BEING REMOVED. DAMAGED SURFACES, EQUIPMENT AND FINISHES SHALL BE REPAIRED, AT NO ADDITIONAL COST, TO THEIR ORIGINAL CONDITION OR PREPPED FOR NEW FINISH WORK AS DEVOTED.
- D. CONTRACTOR SHALL ERECT AND MAINTAIN SAFETY: BARRIERS, WARNING DEVICES, ENTRY PORTALS, ETC., AS NECESSARY TO PROTECT EMPLOYEES AND THE PUBLIC DURING ALL CONSTRUCTION ACTIVITIES.
- E. WHEN DIRECTED BY OWNER, DEMOLITION ACTIVITIES SHALL BE CONDUCTED IN SUCH A MANNER AS TO MAINTAIN OPERATIONAL STATUS OF BUSINESSES WHICH WILL CONTINUE TO OPERATE DURING CONSTRUCTION. THIS CONTRACTOR SHALL ERECT NECESSARY ENCLOSURES TO PROTECT THESE BUSINESSES AND THEIR EQUIPMENT AND PRODUCTS FROM DAMAGE DUE TO FIRE, THEFT OR VANDALISM. ENTRY PORTAL STRUCTURES SHALL ALSO BE ERECTED TO PROTECT THE PUBLIC ENTERING AND LEAVING THESE BUSINESSES.
- F. DEMOLITION OR ERECTION ACTIVITIES WHICH ARE DEEMED BY THE CONTRACTOR TO BE TO BE HAZARDOUS TO MAINTAIN BUSINESS OPERATIONS OR ACCESS BY THE PUBLIC OR SHALL INTERRUPT THE AVAILABILITY OF UTILITY SERVICE SHALL REQUIRE THE CONTRACTOR TO NOTIFY THE OWNER AND BUSINESSES AFFECTED BY THIS WORK OF THE NEED FOR TEMPORARY CLOSURE AND SHALL PROVIDE A SCHEDULE INDICATING THE DATES CLOSURE WILL BE NECESSARY AND THE TYPE OF ACTIVITY THAT WILL BE OCCURRING DURING THAT PERIOD.
- G. THE ARCHITECT SHALL BE NOTIFIED OF ANY EXISTING BEARING WALL, FOUNDATION COMPONENT, STRUCTURAL MEMBER, ANCHORING CONNECTION OR REINFORCING CONNECTION WHICH HAS BEEN COMPROMISED BY FIRE, WATER, MOLD, DEMOLITION ACTIVITIES OR AGE OR WHICH APPEARS TO BE SUBSTANDARD WITH RESPECT TO THE STANDARDS DEFINED BY CURRENT CODE PRACTICES OF CONSTRUCTION. FOR ASSESSMENT, PRIOR TO FURTHER WORK BEING CONDUCTED IN THE SUSPECT AREA.
- H. SURFACES DAMAGED BY DEMOLITION OR OPENINGS RESULTING FROM REMOVED WALLS, DOORS, FIXTURES, EQUIPMENT, CEILING, ETC. SHALL BE REPAIRED SUCH THAT THE INTERIOR AND EXTERIOR SURFACES MATCH THE SURROUNDING MATERIAL, TEXTURE, FINISH AND COLOR. THE FINISHED SURFACE SHALL NOT BE DISTINGUISHABLE FROM THE SURROUNDING SURFACE.
- I. FIRE PROTECTED SURFACES DAMAGED BY DEMOLITION OR NEW CONSTRUCTION ATTACHMENTS SHALL BE REFINISHED WITH LIKE MATERIALS TO THE DEPTHS AND ASSEMBLIES OF THE SURROUNDING FIRE PROTECTION SYSTEM.
- J. CLOSED IN, EXTERIOR OPENINGS, SHALL BE INSULATED WITH BATT INSULATION TO THE FULL DEPTH OF THE WALL CAVITY.
- K. CONTRACTOR SHALL CUT OFF ALL PIPES, CONDUIT AND OTHER ITEMS THAT GO BELOW THE SLAB AT THE TOP OF SLAB, AND SHALL NOT DAMAGE OR CUT ANY PART OF THE EXISTING SLAB ITSELF.

SALVAGE

1. GENERAL CONTRACTOR SHALL SURVEY THE PROJECT WITH APPROPRIATE FACILITY STAFF TO DETERMINE DISPOSITION OF THE FOLLOWING ENCOUNTERED ITEMS. CONTRACTOR SHALL SALVAGE ALL FLAGGED ITEMS AND DELIVER TO THE APPROPRIATE FACILITY SALVAGE LOCATION(S).

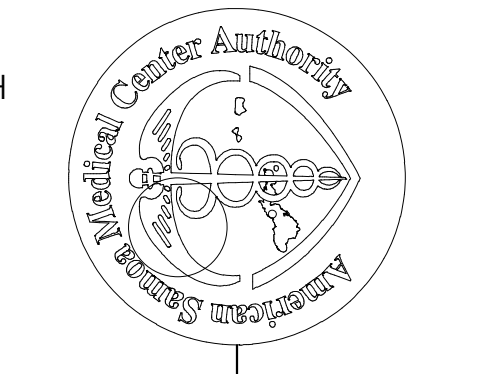
LED EXIT LIGHTS	CHALK/WHITE BOARDS	EMCS EQUIPMENT
METERS (ALL)	DOOR HARDWARE	DRINKING FOUNTAINS
WINDOW BLINDS	BACKFLOW PREVENTERS	FIRE ALARM DEVICES
SIMPLEX EQUIPMENT	LAB FIXTURES	LAB EQUIPMENT
LIFE SAFETY EQUIP.		
AED'S		
AED CABINETS		
KNOX BOXES		
KNOX FDC'S		
FIRE EXTINGUISHERS		
EXTINGUISHER CABINETS		
WOOD / HM DOORS	ELECTRICAL PANELS	MECH EQUIP
CEILING DIFFUSERS	PROJECTION SCREENS	MIRRORS
IRRIGATION EQUIP.	REFRIGERATION EQUIP	PLUMBING FIXTURES
CASEWORK	DISCONNECT SWITCHES	ELEVATOR EQUIP.
SOAP/PAPER DISP.	CLOCKS	ACCESS DOORS
ELEC LIGHT FIXTURES	ELECTRICAL EQUIP.	STARTERS
WINDOWS	TRANSFORMERS	THERMOSTATS
SHELVING	HVAC MIXING BOXES	

RECYCLE

1. GENERAL CONTRACTOR SHALL COORDINATE WITH THE APPROPRIATE FACILITY STAFF TO DETERMINE IF THE FOLLOWING OR ANY ADDITIONAL ITEMS SHALL BE RECYCLED. PROVIDE RECEIPT DOCUMENTATION TO OWNERS REPRESENTATIVE AS TO THE RECEIVING AGENCIES OF THE RECYCLED ITEMS.

CEILING TILES	METAL STUDS	METAL CEILING GRID
METAL CORNER GUARDS		

ADDENDUM 1	2023/09/27	DATE
1	No	REVISIONS / SUBMISSIONS

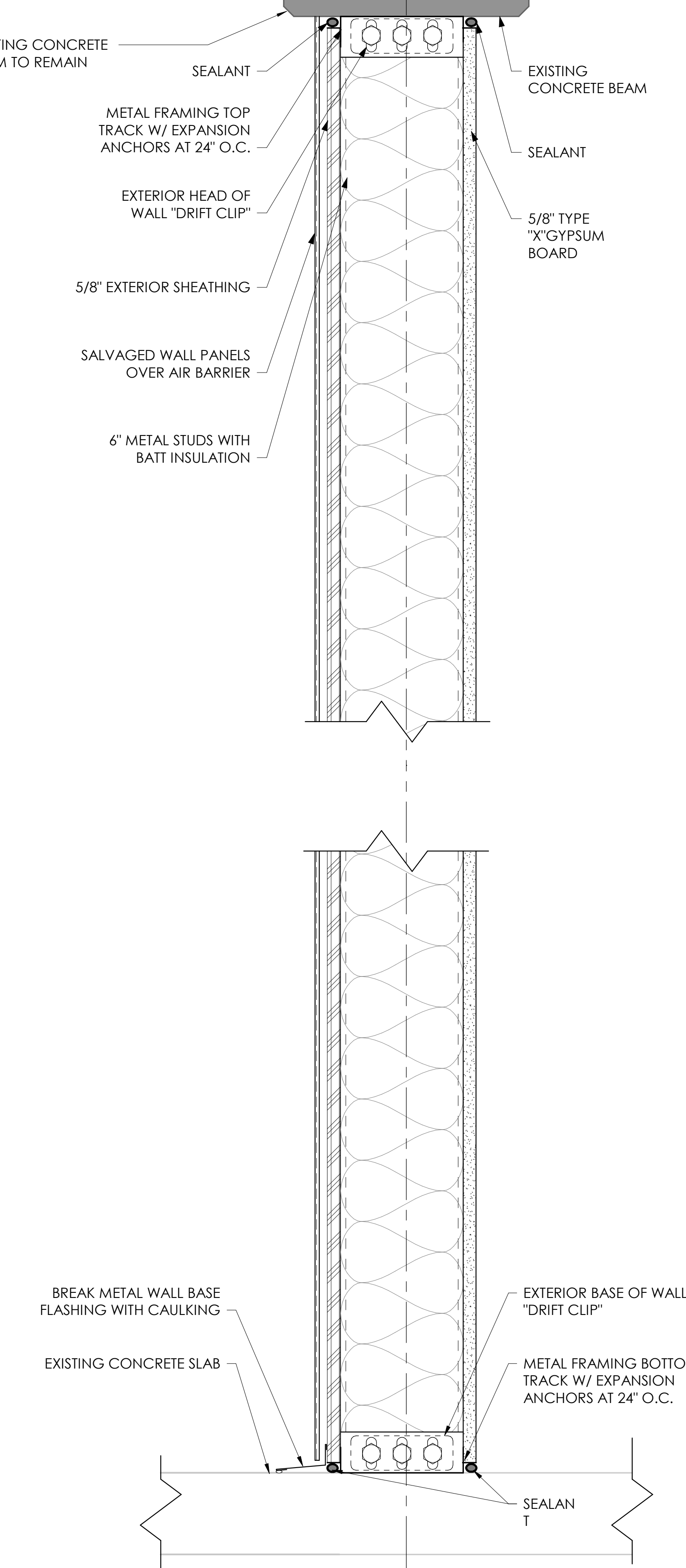
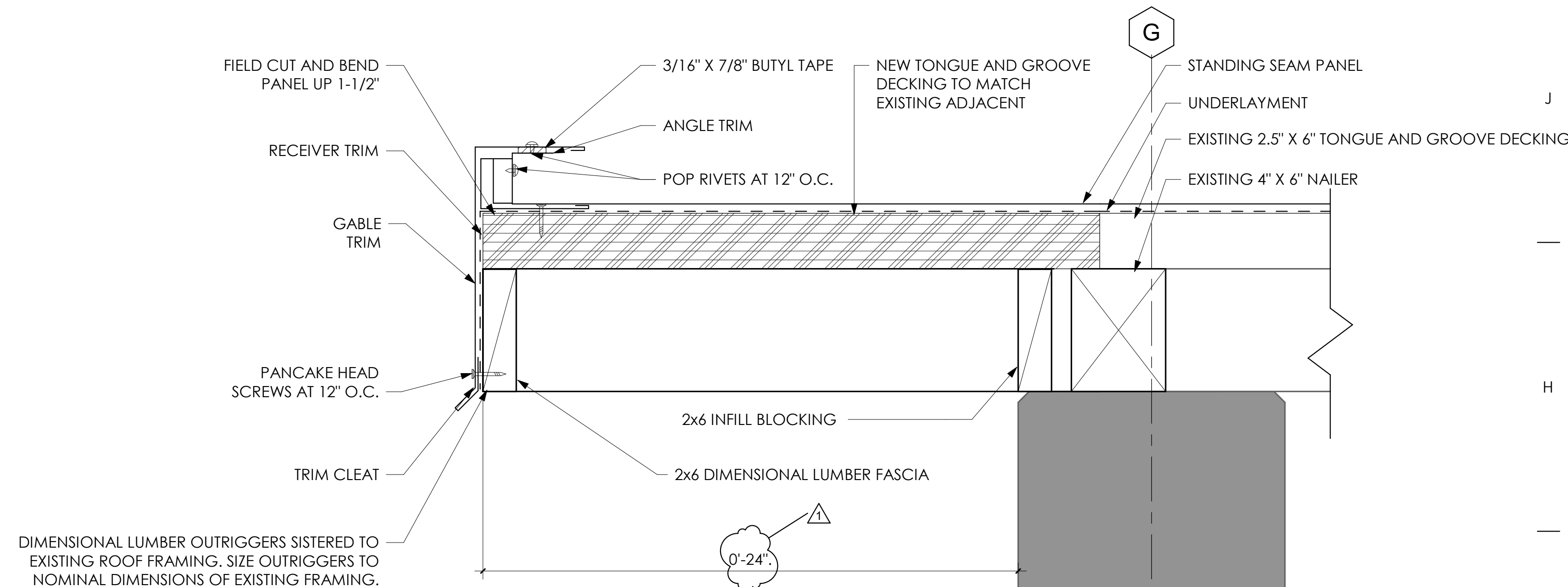
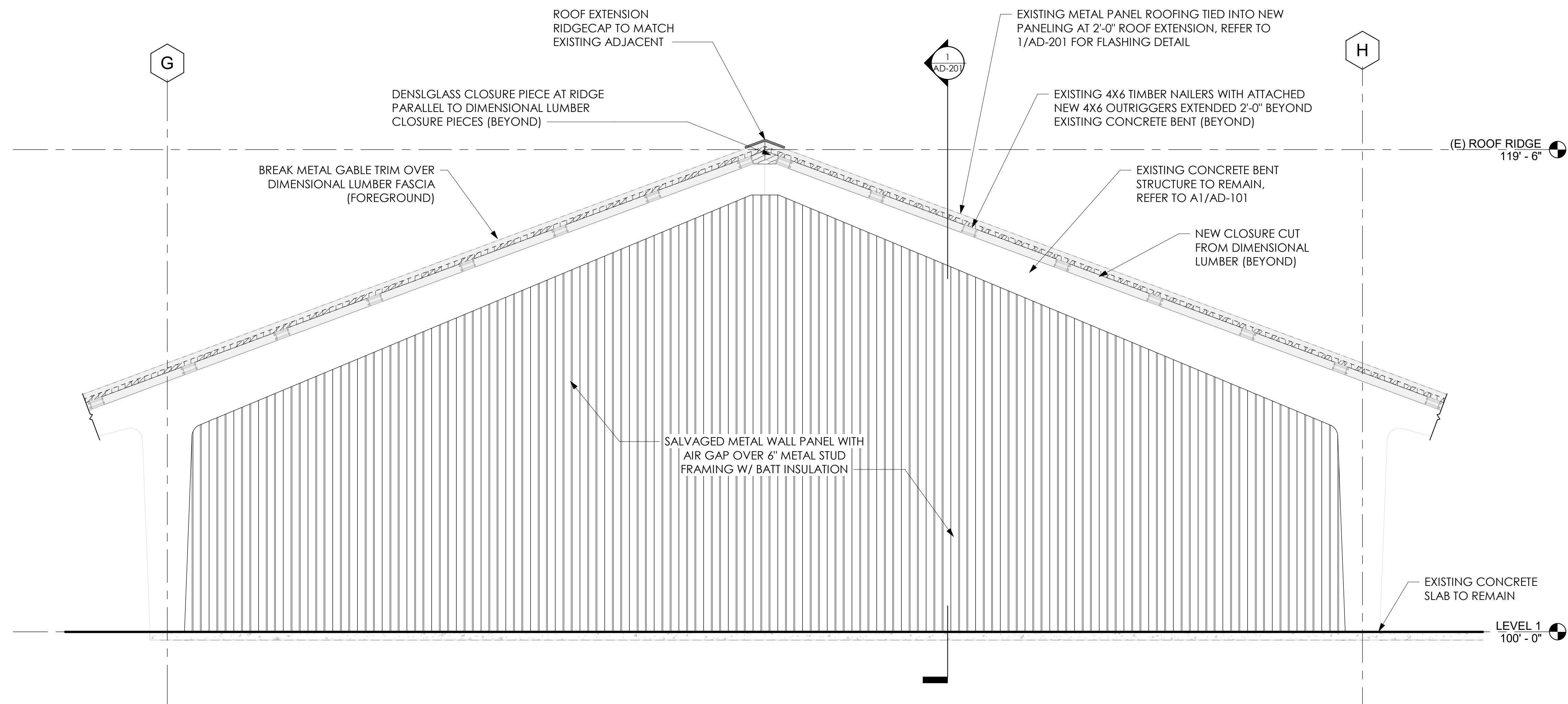


GLHN
ARCHITECTS & ENGINEERS, INC.
299 E. Broadway Blvd., Tucson, AZ 85716
T. 520.881.4544 F. 520.795.1822 GLHN.com

LBJ TROPICAL MEDICAL CENTER
PRELIMINARY DEMOLITION PACKAGE
ARCHITECTURAL SITE DEMOLITION PLAN - AREA A



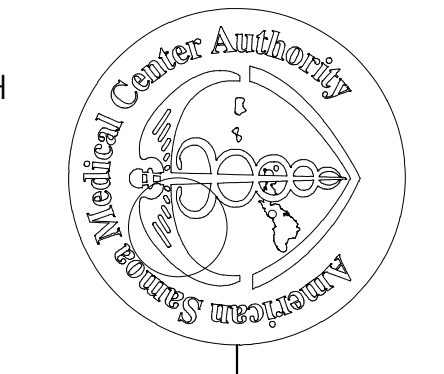
PROJECT NO.: 23020.00
DESIGN BY: ECP
DRAWN BY: RMH
CHECKED BY: RLC
DATE: 2023/09/13



2 TEMPORARY WALL ELEVATION
SCALE: 3/8" = 1'-0"

1 TEMPORARY ENCLOSURE WALL
SCALE: 3" = 1'-0"

NO	REVISIONS / SUBMISSIONS	DATE
1	ADDENDUM 1	2023/09/27

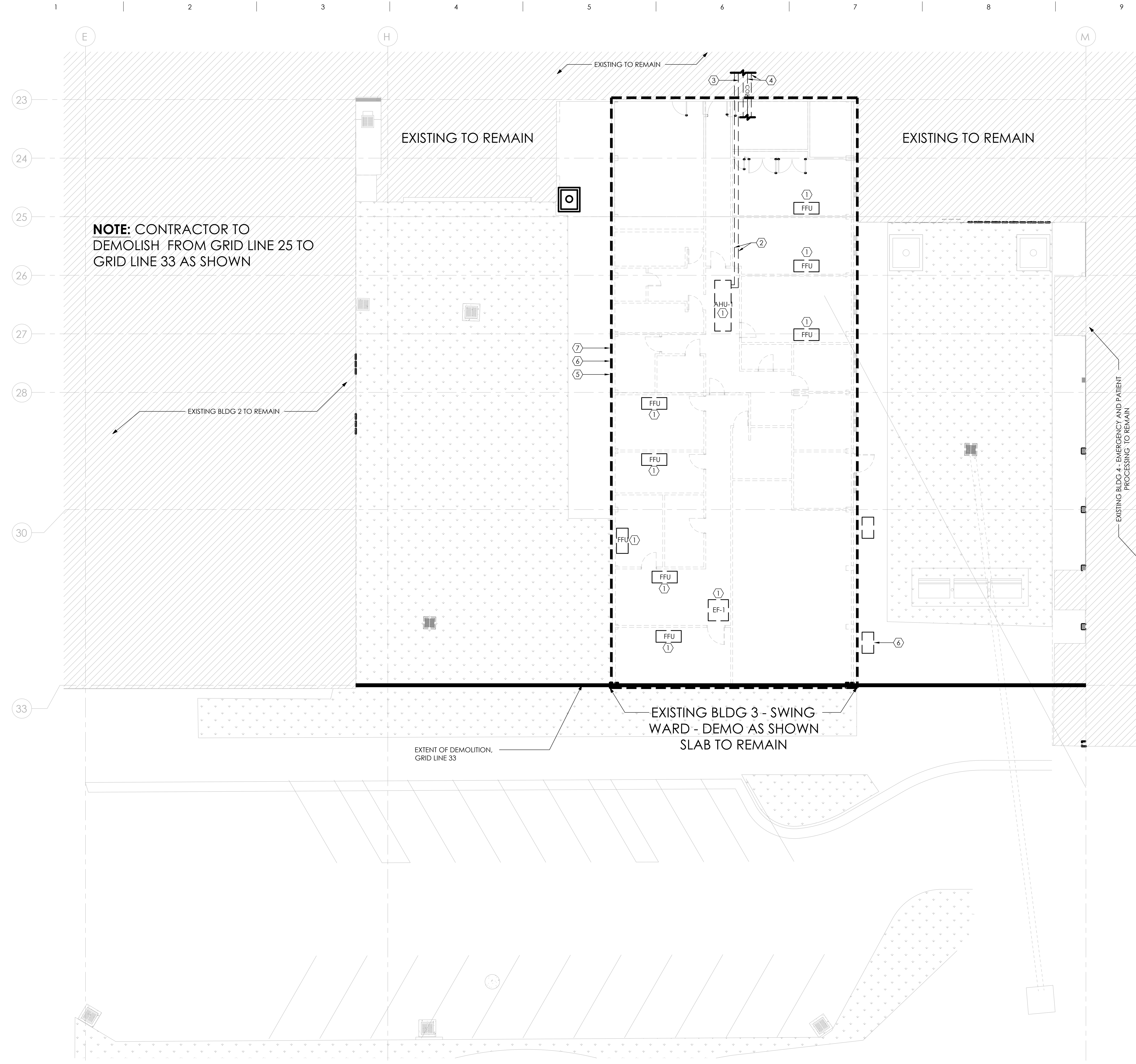


GLHN
ARCHITECTS & ENGINEERS, INC.
2998 E. Broadway Blvd., Tucson, AZ 85716
T. 520.881.4544 F. 520.795.1822 GLHN.com

GLHN
ARCHITECTS & ENGINEERS, INC.
2998 E. Broadway Blvd., Tucson, AZ 85716
T. 520.881.4544 F. 520.795.1822 GLHN.com



PROJECT NO.: 23020.00
DESIGN BY: CK
DRAWN BY: TK
CHECKED BY: EP
DATE: 2023/09/13



NOTE: CONTRACTOR TO DEMOLISH FROM GRID LINE 25 TO GRID LINE 33 AS SHOWN

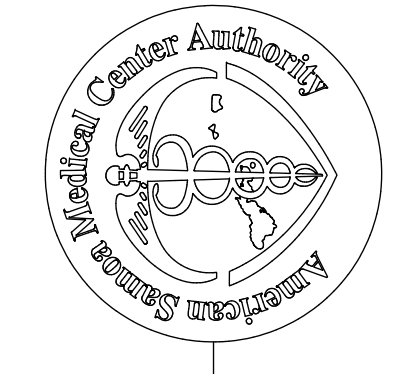
KEYNOTES

1. REMOVE EXISTING AIR HANDLING UNIT (AHU-1), EXHAUST FAN (EF-1), FAN FILTER UNITS (FFU), AND INSTALLATION HARDWARE AND RETURN TO LBJ.
2. DEMOLISH EXISTING CHILLED WATER PIPING BACK TO POC IN CORRIDOR, EXISTING CHILLED WATER SHUTOFF VALVES TO REMAIN, PROVIDE AND INSTALL CAPS FOR VALVES.
3. DEMOLISH EXISTING DOMESTIC HOT WATER PIPING BACK TO POC IN CORRIDOR, EXISTING DOMESTIC HOT WATER SHUTOFF VALVES TO REMAIN, PROVIDE AND INSTALL CAPS FOR VALVES.
4. DEMOLISH EXISTING O2 AND VAC PIPING BACK TO POC/VALVE IN CORRIDOR.
5. CAREFULLY REMOVE ALL HVAC CONTROLS COMPONENTS, INCLUDING CONTROL PANELS, DISPLAY MONITOR, ROOM TEMPERATURE MONITORS, ROOM PRESSURE MONITORS, BALL-IN-WALL ROOM PRESSURE DISPLAYS, VFD'S, AND FLOW METERS.
6. EXISTING DX SPLIT SYSTEMS LOCATED ON SIDE OF BUILDING TO BE DEMOLISHED AND PROVIDED BACK TO LBJ, WHERE UNIT SERVES AREAS OUTSIDE DEMOLITION SCOPE AREA, DX SPLIT UNIT TO BE RELOCATED AND REINSTALLED, NOT ALL UNITS SHOWN, VERIFY IN FIELD, TYPICAL.
7. ALL PLUMBING FIXTURES TO BE DEMOLISHED AND BELOW SLAB WASTE PIPING TO BE CAPPED AND SEALED AT THE FLOOR, DEMOLISH SANITARY VENT PIPING BACK TO ROOF, PATCH AND REPAIR ROOF TO BE WATERTIGHT PER LBJ CRITERIA.

GENERAL NOTES (DEMOLITION):

- A. DO NOT COMMENCE DEMOLITION WORK UNTIL OWNER HAS REMOVED EXISTING FURNISHINGS, APPLIANCES, EQUIPMENT, COMPUTERS, MONITORS AND DEMOUNTABLE OR MOVABLE DEVICES, SHELVES, SUPPLIES, ETC. AND HAS PROVIDED THE DEMOLITION CONTRACTOR WITH WRITTEN NOTICE TO PROCEED.
- B. PROTECT ALL ADJACENT EXISTING CONSTRUCTION FROM DAMAGE NOT INDICATED AS BEING REMOVED. DAMAGED SURFACES, EQUIPMENT AND FINISHES SHALL BE REPAIRED, AT NO ADDITIONAL COST, TO THEIR ORIGINAL CONDITION OR PREPARED FOR NEW FINISH WORK AS DENOTED.
- C. CONTRACTOR SHALL ERECT AND MAINTAIN SAFETY BARRIERS, WARNING DEVICES, ENTRY PORTALS, ETC., AS NECESSARY TO PROTECT EMPLOYEES AND THE PUBLIC DURING ALL CONSTRUCTION ACTIVITIES.
- D. WHEN DIRECTED BY OWNER, DEMOLITION ACTIVITIES SHALL BE CONDUCTED IN SUCH A MANNER AS TO MAINTAIN OPERATIONAL STATUS OF BUSINESSES WHICH WILL CONTINUE TO OPERATE DURING CONSTRUCTION. THIS CONTRACTOR SHALL ERECT NECESSARY ENCLOSURES TO PROTECT THESE BUSINESSES AND THEIR EQUIPMENT AND PRODUCTS FROM DAMAGE DUE TO FIRE, THEFT OR VANDALISM. ENTRY PORTAL STRUCTURES SHALL ALSO BE ERRECTED TO PROTECT THE PUBLIC ENTERING AND LEAVING THESE BUSINESSES.
- E. DEMOLITION OR ERECTION ACTIVITIES WHICH ARE DEEMED BY THE CONTRACTOR TO BE TO HAZARDOUS TO MAINTAIN BUSINESS OPERATIONS OR ACCESS BY THE PUBLIC OR SHALL INTERRUPT THE AVAILABILITY OF UTILITY SERVICE SHALL REQUIRE THE CONTRACTOR TO NOTIFY THE OWNER AND BUSINESSES AFFECTED BY THIS WORK OF THE NEED FOR TEMPORARY CLOSURE AND SHALL PROVIDE A SCHEDULE INDICATING THE DATES CLOSURE WILL BE NECESSARY AND THE TYPE OF ACTIVITY THAT WILL BE OCCURRING DURING THAT PERIOD.

No	REVISIONS / SUBMISSIONS	DATE



LBJ TROPICAL MEDICAL CENTER
PRELIMINARY DEMOLITION PACKAGE

GLHN
ARCHITECTS & ENGINEERS, INC.
2939 E. Broadway Blvd., Tucson, AZ 85716
T: 520.881.4546 F: 520.795.1822 GLHN.com

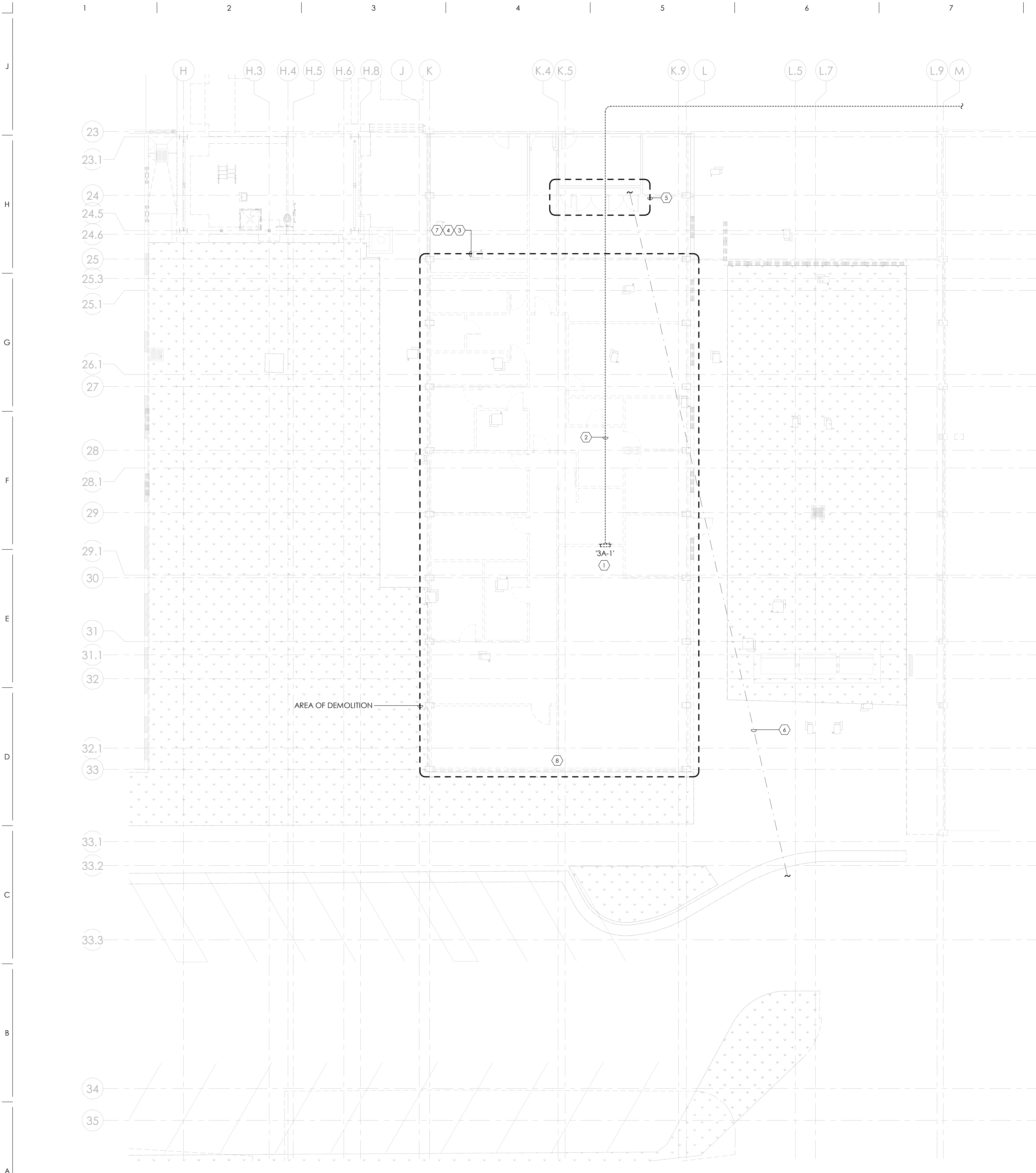


PROJECT NO.: 23020.00
DESIGN BY: GPW
DRAWN BY: GPW
CHECKED BY: MH
DATE: 2023/09/13

MPD-101
COPYRIGHT 2020 GLHN ARCHITECTS & ENGINEERS, INC.
ALL RIGHTS RESERVED.

A1 MECHANICAL-PLUMBING SITE DEMOLITION PLAN - AREA A
SCALE: 1/8" = 1'-0"





1 LEVEL 1 ELECTRICAL DEMOLITION PLAN - AREA A
SCALE: 1/8" = 1'-0"

GENERAL NOTES

- A. CONTRACTOR SHALL REMOVE ALL EXISTING LIGHTING FIXTURES FROM THE INTERIOR / EXTERIOR OF THE IDENTIFIED BUILDING(S) AS INDICATED IN THIS PLAN. REMOVAL OF LIGHTS IS INCLUSIVE OF ALL LIGHTS, CONTROLS, BRANCH CIRCUITRY, CONDUCTORS, AND CONDUIT BACK TO THE BRANCH CIRCUIT PANELBOARD OR TO THE NEAREST LIVE JUNCTION BOX TO REMAIN ENERGIZED.
- B. CONTRACTOR SHALL REMOVE ALL EXISTING WIRING DEVICES, BOXES, AND THEIR RESPECTIVE BRANCH CIRCUIT CONDUCTORS AND CONDUIT FROM EACH DEVICE BACK TO ITS RESPECTIVE BRANCH CIRCUIT PANELBOARD OR NEAREST LIVE JUNCTION BOX TO REMAIN ENERGIZED.
- C. CONTRACTOR SHALL REMOVE ELECTRICAL FEEDER(S) TO EXISTING MECHANICAL EQUIPMENT NOTED TO BE DEMOLISHED ON THE MECHANICAL PLANS. THIS REMOVAL SHALL INCLUDE LOCAL DISCONNECTS AND FEEDERS FROM MECHANICAL UNIT(S) BEING REMOVED TO ITS RESPECTIVE POWER SOURCE(S) AND CONTROL CABLES(S).
- D. I.T. HEAD-END EQUIPMENT TO REMAIN IN PLACE UNTIL FUTHER NOTICE.
- E. CONTRACTOR SHALL DEMOLISH EXISTING ELECTRICAL DEVICES AND EQUIPMENT BETWEEN COLUMN LINES 25 AND 33.

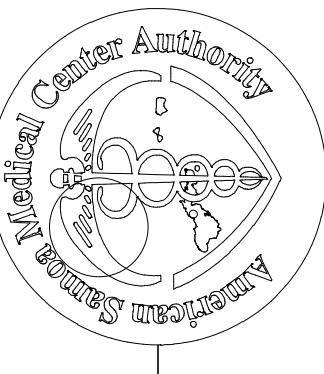
DEMOLITION NOTES

- AA. ALL NOISE-GENERATING DEMOLITION ACTIVITIES TO BE COORDINATED WITH HOSPITAL PRIOR TO COMMENCEMENT OF WORK AND SHALL BE PERFORMED DURING HOURS OF NORMAL OPERATION OR AS REQUIRED BY HOSPITAL.
- BB. LBJTMC SHALL MAINTAIN RIGHT OF FIRST REFUSAL FOR ALL ELECTRICAL COMPONENTS, CABLE AND MISCELLANEOUS OTHER ITEMS WHICH ARE REQUIRED TO BE REMOVED AND WHICH MAY HAVE NOT BEEN REMOVED BY LBJTMC. ALL MATERIALS REFUSED BY LBJ TMC SHALL BE REMOVED FROM THE SITE AT THE EXPENSE OF THE CONTRACTOR.
- CC. ALL BUILDING AREAS SUCH AS REQUIRED STAGING AREAS, CORRIDORS, STORAGE AREAS, ETC SHALL BE CLEAN AND UNENCUMBERED DURING CONSTRUCTION.
- DD. ALL ELECTRICAL EQUIPMENT WHICH PENETRATES AND OR PASSES THROUGH WALL SURFACES, STRUCTURAL WALLS, FLOORS AND CEILINGS SHALL BE SEALED AGAINST AIR INFILTRATION FROM ADJACENT AREAS.
- EE. MAINTAIN POWER TO EXISTING EQUIPMENT AND DEVICES DOWNSTREAM OF DEMOLITION WORK.

KEYNOTES

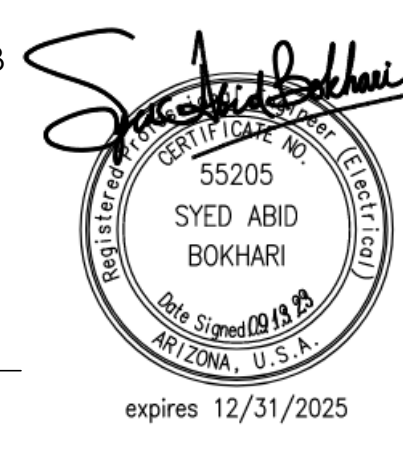
- 1 EXISTING PANELBOARD 3A-1 TO BE REMOVED. PRIOR TO DEMOLITION FIELD VERIFY WHETHER PANELBOARD SERVES EXISTING IT ROOM LOADS. NOTIFY ENGINEER WITH FINDINGS.
- 2 DISCONNECT AND REMOVE EXISTING ABOVE CEILING FEEDER AND RACEWAY BACK TO SOURCE PANEL 3B-2. MOVE SOURCE BREAKER TO OPEN POSITION AND LABEL AS SPARE.
- 3 LIGHTING AND CONTROLS WITH ASSOCIATED CIRCUITING IN THIS AREA TO BE REMOVED BACK TO PANEL 3A1.
- 4 REMOVE DEVICES AND ASSOCIATED CIRCUITING BACK TO PANEL 3A1.
- 5 EXISTING IT EQUIPMENT AND ASSOCIATED CIRCUITING TO REMAIN UNCHANGED WITHOUT POWER INTERRUPTION DURING DEMOLITION AND SCHEDULED POWER OUTAGES.
- 6 APPROXIMATE LOCATION OF EXISTING UNDERGROUND FIBER LINE. CONTRACTOR TO FIELD VERIFY LOCATION AND ROUTING. PROTECT IN PLACE AND REPAIR AS REQUIRED. 1302
- 7 REMOVE EXISTING DISCONNECT SWITCHES AND ELECTRICAL DISTRIBUTION SERVING EXTERIOR MOUNTED CONDENSING UNITS. COORDINATE REMOVAL WITH MECHANICAL PRIOR TO COMMENCEMENT OF WORK.
- 8 REMOVE AND RELOCATE EXISTING ROOF MOUNTED LOW VOLTAGE DEVICE AND ASSOCIATED INTERIOR AND EXTERIOR CABLING. COORDINATE RELOCATION AND ASSOCIATED REQUIREMENTS WITH LBJ PRIOR TO REMOVAL.

NO	REVISIONS / SUBMISSIONS	DATE



LBJ TROPICAL MEDICAL CENTER
PRELIMINARY DEMOLITION PACKAGE
LEVEL 1 ELECTRICAL DEMOLITION PLAN

GLHN
ARCHITECTS & ENGINEERS, INC.
299 E. Broadway Blvd. Tucson, AZ 85714
T. 520.881.4544 F. 520.795.1822 GLHN.com



PROJECT NO.: 23020.00
DESIGN BY: RD/FM
DRAWN BY: FM
CHECKED BY: RD/AB
DATE: 2023/09/13